

Handheld Monocular Occluders

Black Length: 9" 93115
 White Length: 9" 93116



Handheld Double-ended Occluders

Black Occluder and Maddox Lens 93141
 Length: 9-5/8"



Black Occluder and Red Lens 93146
 Length: 9-5/8"



Red Lens and Maddox Lens 93147
 Length: 9-5/8"



Handheld Single Pinhole Occluder 9313

Black Long handle: 9"



Handheld Maddox Rod

Handheld Maddox Rod 9314
 Long handle Length: 9"



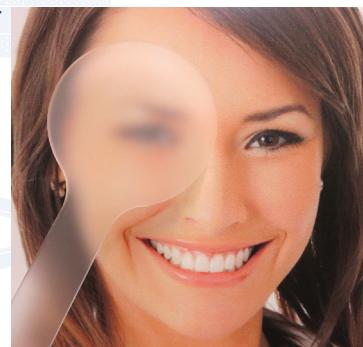
Handheld Multiple Pinhole Occluder 9312

Black Long handle: 9"



Spielmann Translucent Occluder 93501

Translucent Occluder
 Length: 8-1/2"
 (23.5 cm)



The occluder is designed to provide occlusion while at the same time giving the practitioner the opportunity to observe any movements of the occluded eye.

Lorgnette Pinhole Occluder 93101



With multiple pinhole attachment
 17 holes (1.5 mm diam.)
 The multiple pinhole attachment
 will stay in its "upright" position
 due to an improved design.
 Strong, self-formed rivet for long
 durability.

Handheld Red Lens Occluder 9300

Long handle. Length: 9"



OPTEGO / USA
 3391 E Hemisphere Loop
 Tucson, AZ 85706
 Phone 866-678-6723
 Fax 520-209-1586
 email@optego.com
 www.optegousa.com

OPTEGO / CANADA
 3600B Laird Rd, Unit 3
 Mississauga ON L5L 6A7
 Phone 1 416-780-1289
 Toll Free 1 877-678-3464
 Fax 1 877-471-6001
 orders@optego.com
 www.optego.com

OPTEGO / SINGAPORE
 60 Paya Lebar Rd #11-33
 Paya Lebar Square
 Singapore 409051
 Phone +65 6742 5940
 asia@optego.com
 www.optego.com.sg