

OPTEGO®

EPIGLARE® Glare Testing Defined



98871 Binocular Phoropter Kit



98872 Handheld Desk Kit



98870 Single Phoropter Kit

Key Benefits

Documents glare disability without leaving refracting lane
Allows examiner to test at the phoropter with best corrected vision

Three levels for glare testing
Switch easily between intensity settings

Patented LED array
Designed to simulate glare from oncoming headlights

Tests night vision
Poor visual acuity while driving at night is a key complaint of cataract patients

Standard procedure makes testing accurate and reproducible
Allows documenting results with minimal training

Offers binocular glare testing option
Models include binocular and single eye units for manual phoropters and a handheld version

Easy to install and use
Versatile mounting bracket, handle and base allows the EpiGlare to adapt to practice workflow

Long battery life
All devices offer over 9 hours run time per charge; eliminating the need to use valuable lane charging wells and handles

Smart power level feature
Power indicator light ensures every test is at the right power level

Documents glare disability efficiently
Cataracts are known to cause reduced vision and disabling glare. This is particularly significant for older patients driving an automobile at night. Lack of adequate documentation of this visual impairment in patients with cataracts may result in denial for coverage of cataract surgery from Medicare and private insurance companies. While many methods of glare documentation suffer from inconsistent light intensity and angle, the EpiGlare offers a standardized repeatable approach to measuring and documenting glare disability with best corrected vision.

For more Information visit glaretester.com

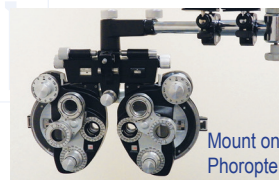
EpiGlare Packages

The EpiGlare eye piece can be removed from the handheld desk kit and placed in the phoropter: no additional attachment is necessary.



EpiGlare Testing Unit

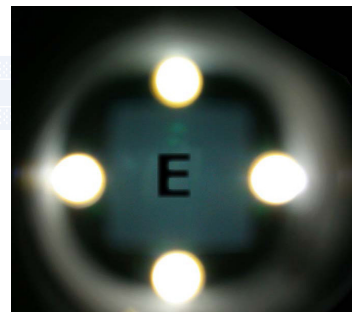
Single Phoropter Kit	98870
1 testing unit, 1 phoropter bracket, 2 batteries, 1 wall charger	
Binocular Phoropter Kit	98871
2 testing units, 2 phoropter brackets, 4 batteries, 2 wall chargers	
Handheld Desk Kit	98872
1 testing unit, 1 handle/stand, 2 batteries, 1 wall charger	
Battery and Charger Kit	98873
2 batteries, 1 wall charger	
Extra Phoropter Bracket	98874
Replacement Handle and Stand (for handheld kit)	98875



Mount on Phoropter



Mount on Table



Patient view at Phoropter

OPTEGO / USA
3391 E Hemisphere Loop
Tucson, AZ 85706
Phone 866-678-6723
Fax 520-209-1586
email@optego.com
www.optegousa.com

OPTEGO / CANADA
3600B Laird Rd, Unit 3
Mississauga ON L5L 6A7
Phone 1 416-780-1289
Toll Free 1 877-678-3464
Fax 1 877-471-6001
orders@optego.com
www.optego.com

OPTEGO / SINGAPORE
60 Paya Lebar Rd #11-33
Paya Lebar Square
Singapore 409051
Phone +65 6742 5940
asia@optego.com
www.optego.com.sg